

SDU is a sustainable university : Green education, research and internal practices

Dewan Ahsan

(Associate Professor)

**Department of Sociology, Environmental and Business Economics
University of Southern Denmark**

(Co-head, The Danish Center for Risk and Safety Management)

Email: dah@sam.sdu.dk



Co-funded by the
Erasmus+ Programme
of the European Union



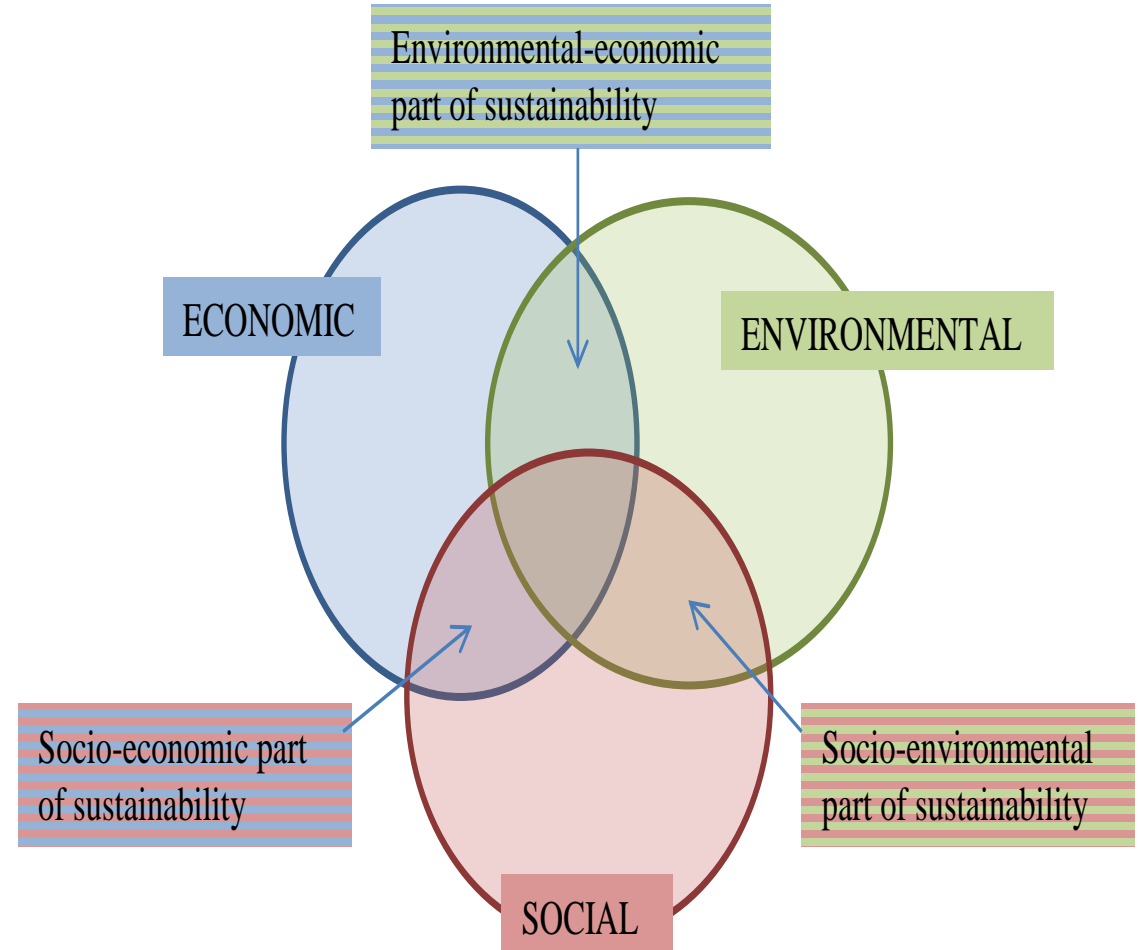
Department of Sociology, Environmental and Business Economics (SEBE)

- ❑ **Management and Economics of Resources and the Environment**
 - ❑ **MSc Environmental and Resource Management**
- ❑ Marketing and Organizational Behavior
 - ❑ MSc in Economics and Business Administration
 - ❑ Marketing and Innovation
 - ❑ Energy Management
 - ❑ MSc in Sports and Event Management
- ❑ Sociology
 - ❑ MSc in Cultural Sociology
- ❑ Research Centers (multidisciplinary)
 - ❑ **Energy Management Center**
 - ❑ **Risk Center**
 - ❑ **Center for Rural Research**



Sustainable development

A development that focuses not only on its economic interest but also consider environmental impact and social interest is called sustainable/green development (people, planet, and profit).



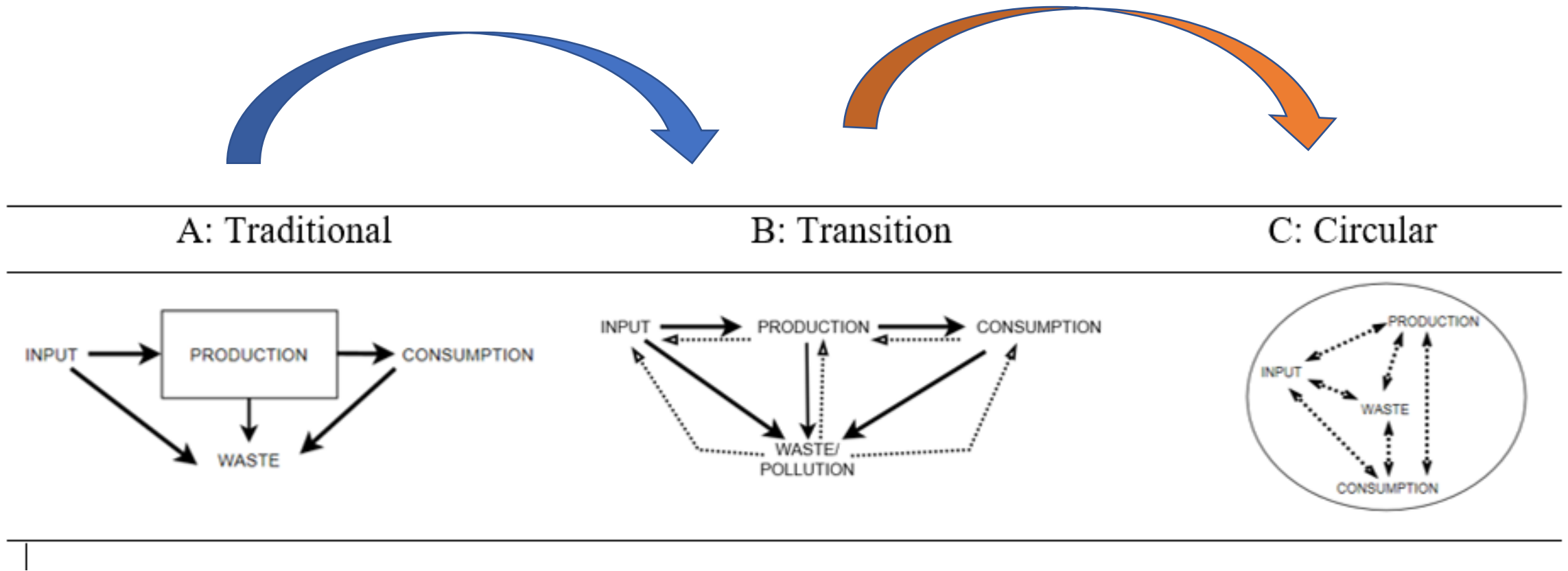


Figure : *The transition process from traditional to circular economy*

(Urs and Dewan 2020, paper under revision)

For Circular Economy and Sustainable Development a strong collaboration among researchers and non-academic stakeholders is mandatory

UN SDGs



Why SDU and SDGs are a match



**UN's 17 Sustainable
Development Goals become
SDU's goals**

SDU wishes to work with all of the **UN's 17 SDGs based on the free, critical and independent research and education.**

SDU's SDG goals in Education

- ☐ **Provide students with education in knowledge, skills and motivation to work with the challenges behind the UN's SDGs.**
- ☐ **Develop and initiate educational initiatives that support citizens' opportunities for 'lifelong employability'.**
- ☐ **Mobilise and engage young people in working with the UN's SDGs.**

SDU's SDG goals in Research

- Respect the individual's freedom of research in accordance with the Danish University Act and consequently the right to choose the subject and method of research.
- Promote the UN's SDGs as a theme for interdisciplinary research work. Several research clusters; e.g., Sustainable marketing, Sus Production
- Strengthen the knowledge collaboration on the UN's SDGs with civil society, NGOs, companies, public organizations and other educational institutions.

• SDU wants to reach out to companies, public institutions, associations and interest groups in its work with the Sustainable Development Goals. Researchers from a wide variety of backgrounds have been collecting data and testing technologies and hypotheses for a number of years. They are now ready to translate their results into a joint effort towards a sustainable future.

• Several projects are from different departments, Economics, Health, Engineering



Welcome to the world of Blue SDU!

Who are we?

Blue SDU is an interdisciplinary research network unifying maritime and marine researchers at SDU. It was established in 2014.



Specific SDG

initiatives

Introductory course for new students on the SDGs

SDG Pool for students at SDU

SDG camp for young people

SDG Award at SDU

SDG forum at SDU

SDU as a sustainable university : Internal practices related to SDGs

Better waste and resource management

- ☐ Bio and catering waste
- ☐ Paper, cardboard
- ☐ Glass and metal and
- ☐ Residual waste.

Bio and catering waste will be used for biogas, residual waste for incineration and glass, metal, paper and cardboard will be recycled.

Paperless University, e.g. digital exams,

Sustainable procurement

SDU will take active social responsibility through the demands we place on our suppliers. The prevailing requirements for compliance with international fundamental rights regarding human and labour rights, environment and production methods etc.



Sustainable canteen operation and catering for meetings

SDU places demands on the canteen lessees for sustainability and a green imprint by tendering out the operation of canteens at SDU's sites.

For example, focus on a minimal wastage of food, limited use of disposable tableware and environmentally harmful plastic and packaging, as well as a green and sustainably varied supply of food. SDU is also working on reducing food waste after meetings and events.

SDGs



Green mobility

Transport is a significant factor in the context of our carbon footprint.

This is being done, i.a., by replacing the university's vehicle fleet with **electric or hybrid cars**, establishing charging points for electric or hybrid cars driven by employees and students, promoting car-pooling and replacing physical meetings with **digital meetings**.



Renewable energy and reduced energy consumption

- ❑ SDU has seen a 35% decrease in energy consumption per FTE since 2008.
- ❑ In 2015, DKK 10 million was allocated for implementing measures such as energy optimization of **ventilation and heating systems, the establishment of solar cells on flat roofs, replacement of lighting systems and better management of heating** as required.
- ❑ **Energy efficiency printers**



Increased biodiversity at SDU's campuses

SDU discontinued the use of pesticides to control weeds on SDU's outdoor areas several years ago and is currently working on a zone plan, which will contribute to increased biodiversity.

SDG



Healthier workplace and place of study

Good classroom, reading places

Interactive learning



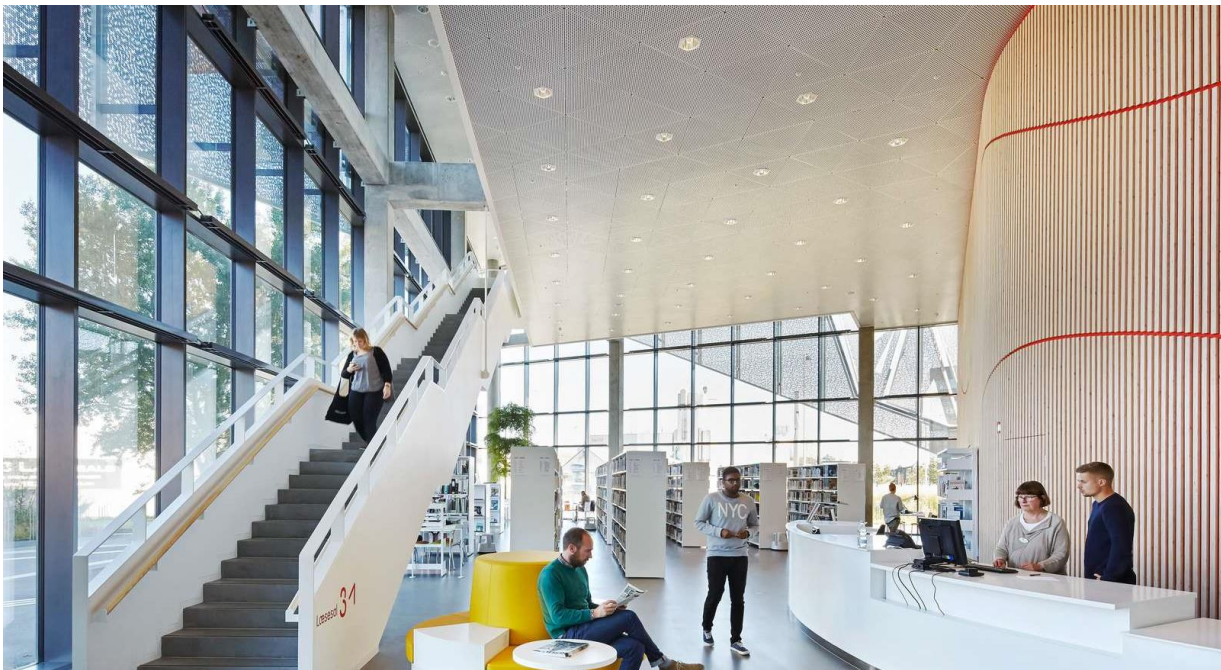
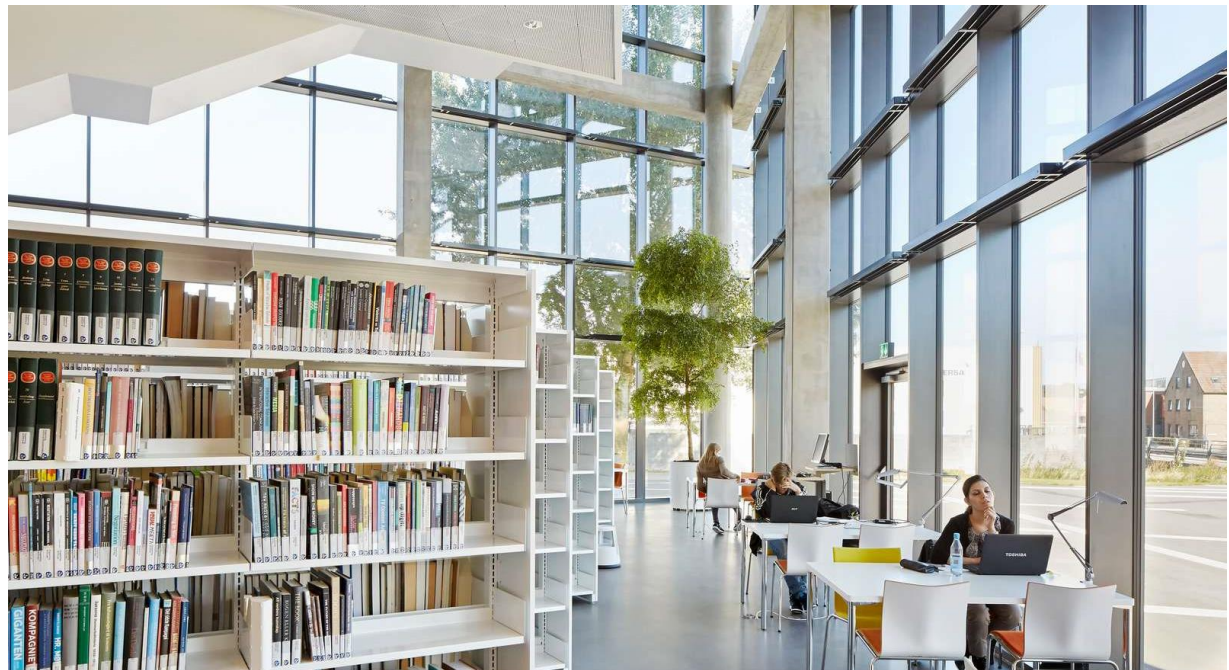
Improved gender equality

As part of the work on the SDGs, SDU is intensifying its work on the university's Gender Equality Initiative. This includes an upgrade of Gender Statistics to follow up on gender balance in regard to recruitment and the filling of posts, and the preparation of local Gender Equality Plans.

The purpose is to ensure that SDU is a diverse workplace with a creative research environment and an inclusive work environment.

SDG





“University is the only place of the world where people encourage disagreement, inspire debate and ensure the atmosphere for open discussion”

We need to uphold these values by giving more spaces to the external partners for real cooperation and for sustainable development process

